

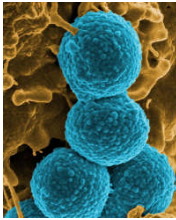
What Does Blood Do?

Your blood fights against infection and helps heal wounds. Your blood is made up of several components—red cells, white cells, plasma, and platelets.



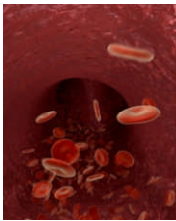
Red Blood Cells

Red cells carry oxygen to the body's organs and tissue.



White Blood Cells

White cells fight infection.



Plasma

Plasma is the liquid that transports platelets and red cells through the bloodstream.



Platelets

Platelets clot your blood to help prevent bleeding.

Who Needs Blood Donations?

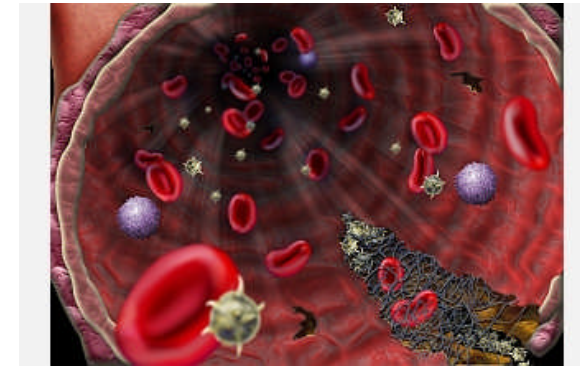
- Your loved one with cancer, hemophilia, or anemia
- Your friend who is having an operation
- Your co-worker who was in a car accident
- Your child who is injured
- People, like you, who may find themselves in the wrong place at the wrong time

How Much Blood Is Typically Used?

Remember: Every time you donate, you are giving one pint of blood.

- Cancer: Up to 8 pints a week
- Sickle cell anemia: Up to 4 pints a week
- Bone marrow transplant: 2 pints a day
- Heart surgery: 6+ pints
- Bleeding ulcers: 3-30 pints
- Car accident: Up to 50 pints

Facts about Blood



and Blood Donations

Scott & White Blood Center
Monday-Thursday: 8 a.m. - 7 p.m.
Friday: 8 a.m. - 4 p.m.

(254) 724-HERO or (877) 724-HERO
bloodcenter.sw.org

Helping Your Community One Pint at a Time

Here at Scott & White Blood Center, your donation benefits your community. All the blood collected stays in the Central Texas area to help our friends and neighbors in their time of need.

Where you donate blood is as important as why you donate.

Did You Know...?

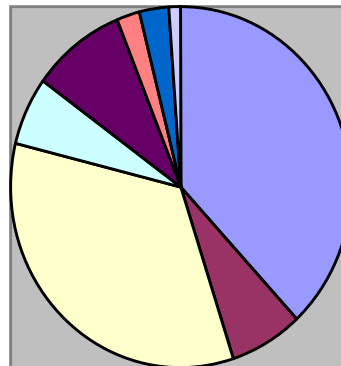
- Approximately 60% of population is eligible to donate blood, but only 5% does.
- Blood can't be made artificially; it can only be given by healthy people like you.
- Each donation can touch the lives of up to two patients.
- The need for blood is constant. Red cells are usable for only 42 days.
- After donating one pint of blood, your body replaces the red blood cells within 56 days.



Every two seconds, someone in the U.S. needs blood. Nearly 400 units of blood must be available each week to meet the needs of Central Texas patients.

Fast Fun Blood Facts

- The average adult body has 10-12 pints of blood. A newborn has about 1 cup of blood!
- In one day, your blood travels 12,000 miles –four times the distance across the United States from coast to coast.
- The human heart creates enough pressure to squirt blood up to 30 feet.
- Every second, 8 million blood cells die in your body, and 8 million more are made.
- Blood travels away from the heart and back again in approximately 20-60 seconds.
- Your heart beats over 3 billion times in your life. That's about 100,000 times a day!



Blood Type Frequency in the United States

■ O positive- 38%
■ O negative- 7%
□ A positive- 34%
□ A negative- 6%
■ B positive- 9%
■ B negative- 2%
■ AB positive- 3%
□ AB negative- 1%

If You Are This Blood Type...	You Can Receive Blood From These Blood Types...
O+	O+, O-
O-	O-
A+	A+, A-, O+, O-
A-	A-, O-
B+	B+, B-, O+, O-
B-	B-, O-
AB+	AB+, AB-, O+, O-, A+, A-, B+, B-
AB-	AB-, O-, A-, B-